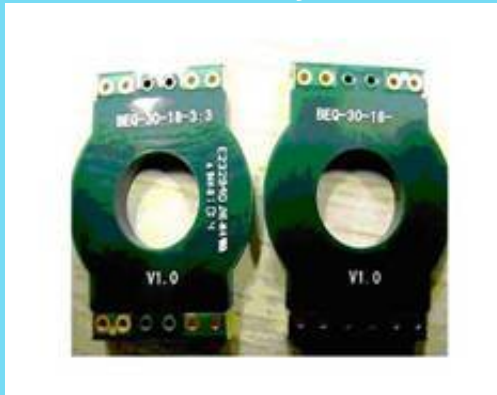


PCB TYPE

Heavy copper

- 18L/4mm
- 4oz on I/O layer



AL PCB

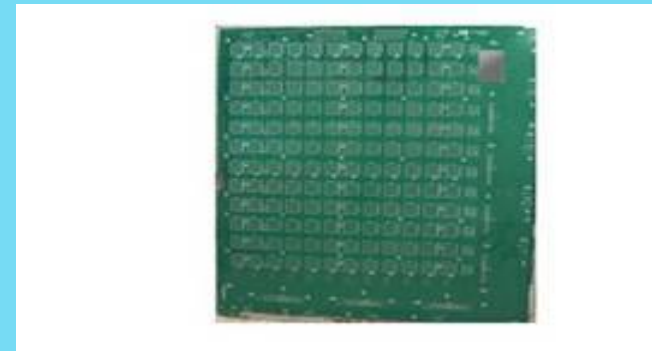
Multilayer

- 16L
- Blind hole



Back plane

- 14L/664x800mm
- 5.2mm



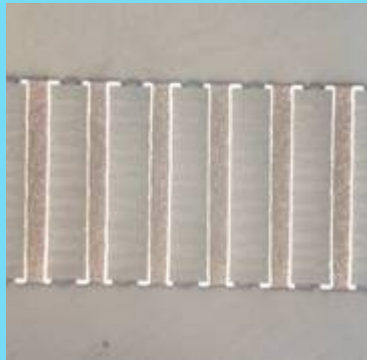
HDI

- 10L/0.1mm

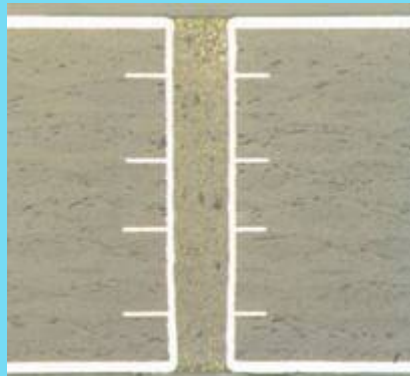


PRODUCT TYPE

Copper paste plug



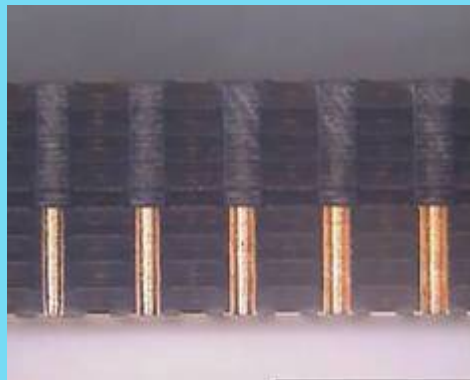
Silver paste plug



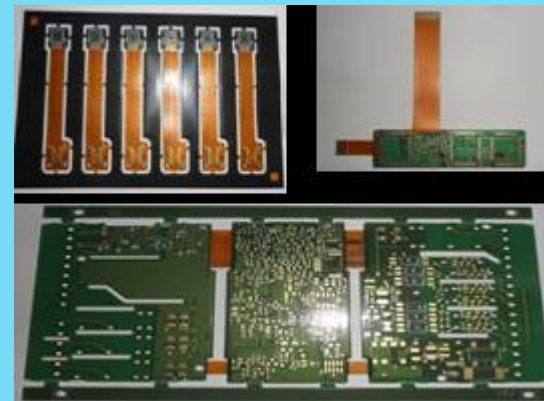
Resin plug



Backdrilling



Rigid-Flex PCB



Key Equipment



Automatic coating machine



CCD parallel expose machine



OPE Pin punching machine



Lamination machine



X-ray drilling Tooling hole



SCHMOLL Drilling machine

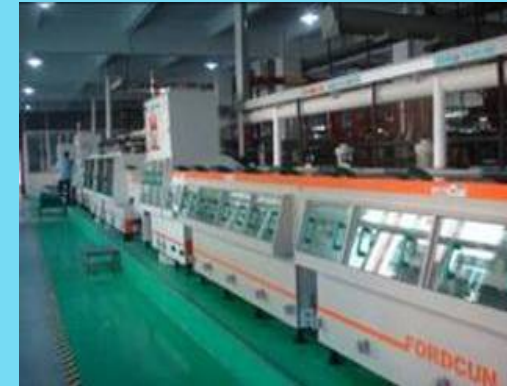
KEY EQUIPMENT



X-ray CM-800



Automatic plating



Etching machine



Gold finger



Pretreatment of Immersion Tin



Pretreatment of Immersion Au

KEY EQUIPMENT



AOI



Visual Inspection machine



Fly Probe



Automatic E-test

KEY RELIABILITY TESTING EQUIPMENT



Ionic contamination



Impedance



DSC Tg tester



ROHS tester



Atom absorption



Temp/Humidity Chamber

Reliability Testing

- ◎ 100% E-TEST
- ◎ 100% Visual Inspection
- ◎ Outline measurement
- ◎ Micro section
- ◎ Solder ability
($245 \pm 5^{\circ}\text{C}$; 3-5 sec)
- ◎ Thermal shocking
($288 \pm 5^{\circ}\text{C}$, 10 sec. 3times)
- ◎ Solder mask peeling testing
- ◎ Peeling intensity testing
- ◎ Impedance testing
- ◎ Ionic contamination testing
- ◎ DSC Tg tester
- ◎ ROHS
- ◎ Temp & Humidity test